

16 February 2010
FOR IMMEDIATE RELEASE



Contact: [Lilah Glick](mailto:Lilah.Glick@cea.org)
Phone: (617) 491-0488

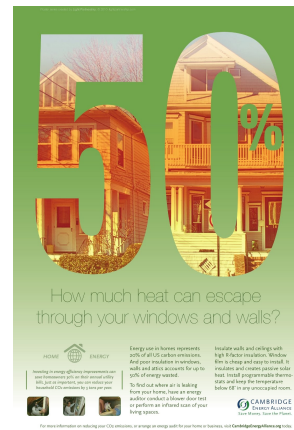
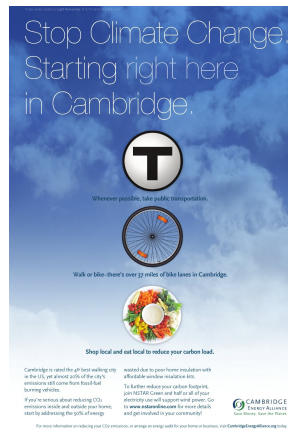
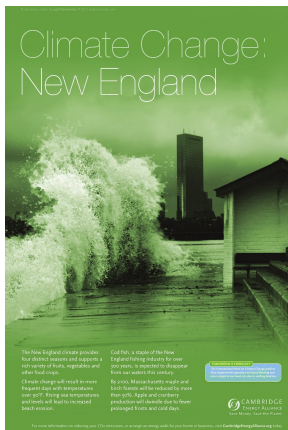
Cambridge Energy Alliance debuts Climate Change Art Project

Cambridge, MA (Feb 16, 2010) - The Cambridge Energy Alliance is debuting a poster art exhibit to inform the public about climate change and its impacts, the carbon emissions of Cambridge, and how local citizens can make a difference. Over 80% of Cambridge's carbon emissions come from energy use in residential and commercial buildings, so eliminating wasted energy in our homes and workplaces is a priority.

The Cambridge Energy Alliance art exhibit displays many ways people can conserve energy and get connected to efficiency programs and resources. The Exhibit will be on display from **Wednesday, February 16th, 2010 through March 20th, 2010** at the Clear Conscience Café located at **581 Massachusetts Ave in Cambridge, MA.**

Following the 4-week showing at the Clear Conscious Café, the CEA art exhibit will be rotated to other locations throughout Cambridge. The 2' X 3' color series include 12 posters with educational and pointed messages about what citizens can do to decrease their environmental footprints.

Sample images from the CEA Art Poster Exhibit



For larger samples of all the slides visit:

<http://cambridgeenergyalliance.org/wp-content/uploads/posters.pdf>

About Clear Conscience Café:

Clear Conscience Café is a mission-based business committed to creating an alternative destination with better tasting, healthier, more environmentally friendly and socially responsible products than conventional businesses in the marketplace. To learn more about the Clear Conscious Café visit <http://www.c3cafe.net>

About Cambridge Energy Alliance:

The Cambridge Energy Alliance is a non-profit organization working with homeowners, businesses, and institutions across the city to achieve unprecedented levels of energy savings and to expand clean energy sources.

This first-in-the nation initiative is the result of the City of Cambridge's commitment to reduce greenhouse gas emissions by 20 percent below 1990. Buildings are responsible for eighty percent of the carbon emissions in Cambridge. For more information on the Cambridge Energy Alliance, please visit CEA's website at <http://CambridgeEnergyAlliance.org>

Also visit CEA's blog, energy 2.0, <http://www.EnergyTwoDotZero.org>, designed to keep the community up to speed on useful clean energy and sustainability news and information.